

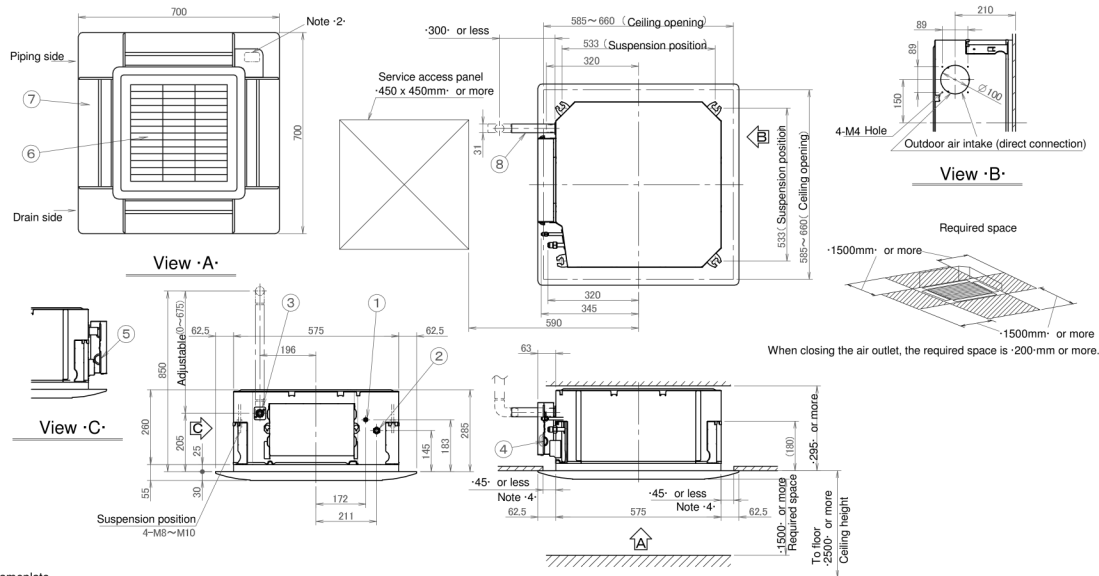
6 Dimensional drawings

6 - 1 Dimensional Drawings with Accessories

FXZA-A

Decoration panel

BYF060B2W1	White Ral 9010
BYF060B3W1	White Ral 9010



Notes

- Location of nameplate
The indoor unit nameplate is located on the bell mouth inside the suction grille.
The decoration panel nameplate is located on the inner frame inside the suction grille.
- When installing a wireless controller, there will be a receiver on this location.
For details, see the drawing of the wireless controller.
- If any of the following conditions are met, additional insulation (glass wool or polyethylene foam, thickness ≥ 10 mm) is required:
Ambient conditions in the ceiling $\geq 30^{\circ}\text{C}$ and $\geq 80\%$ relative humidity.
Fresh air is inducted into the ceiling.
The unit operates continuously.
- Though the installation is acceptable up to maximum ~ 660 -mm square ceiling opening, keep the clearance of ~ 45 -mm or less between the indoor unit and the ceiling opening, so that the panel overlap allowance can be ensured.

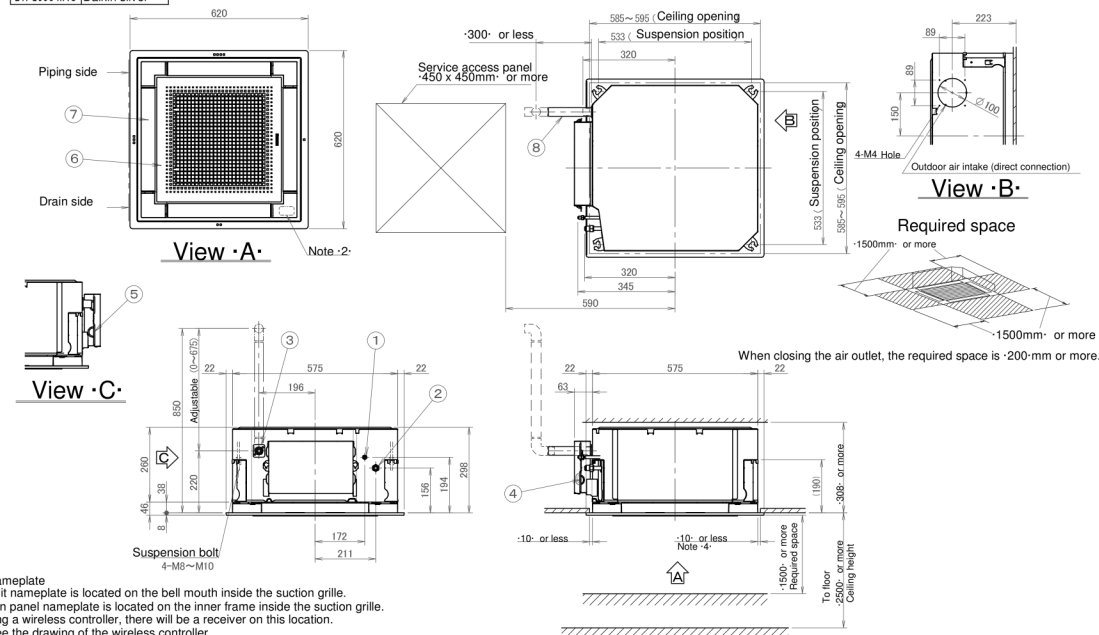
Item	Part name	Item	Part name
①	Liquid pipe connection - $\varnothing 6.4$	⑤	Remote control wiring intake
②	Gas pipe connection - $15.32 \varnothing 9.5$	⑥	Air discharge grille
③	Gas pipe connection - $40.50 \varnothing 12.7$	⑦	Air suction grille
④	Drain outlet - VP20-Outer: $\varnothing 25$	⑧	Drain hose Inner: $\varnothing 25$
④	Power supply		

3D125613A

FXZA-A

Decoration panel

BYF060C4W1	Fresh white -N9.5
BYF060C4W1S	Daikin silver



Notes

- Location of nameplate
The indoor unit nameplate is located on the bell mouth inside the suction grille.
The decoration panel nameplate is located on the inner frame inside the suction grille.
- When installing a wireless controller, there will be a receiver on this location.
For details, see the drawing of the wireless controller.
- If any of the following conditions are met, additional insulation (glass wool or polyethylene foam, thickness ≥ 10 mm) is required:
Ambient conditions in the ceiling $\geq 30^{\circ}\text{C}$ and $\geq 80\%$ relative humidity.
Fresh air is inducted into the ceiling.
The unit operates continuously.
- Though the installation is acceptable up to maximum ~ 595 -mm square ceiling opening, keep the clearance of ~ 10 -mm or less between the indoor unit and the ceiling opening, so that the panel overlap allowance can be ensured.

Item	Part name	Item	Part name
①	Liquid pipe connection - $\varnothing 6.4$	⑤	Remote control wiring intake
②	Gas pipe connection - $15.32 \varnothing 9.5$	⑥	Air discharge grille
③	Gas pipe connection - $40.50 \varnothing 12.7$	⑦	Air suction grille
④	Drain outlet - VP20-Outer: $\varnothing 25$	⑧	Drain hose Inner: $\varnothing 25$
④	Power supply		

3D125141A