

# 6 Dimensional drawings

## 6 - 1 Dimensional Drawings

### FXUA-A

Required space

When closing the air outlet, the required space is ·30·mm or more.  
See note ·3·.

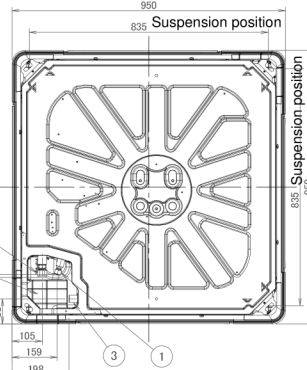
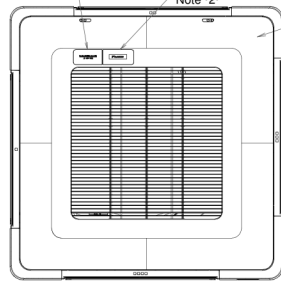
·1500mm· or more

·1500mm· or more

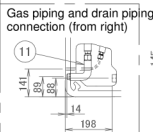
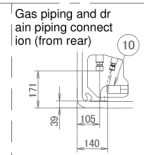
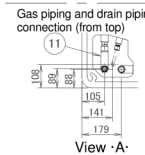
Brand name label

Brand name label

Note ·2·

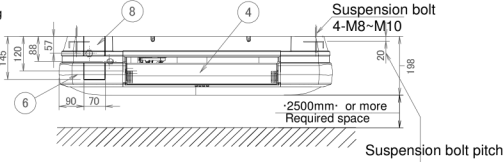


- ① Liquid pipe connection ·AA· flare
- ② Gas pipe connection ·AB· flare
- ③ VP20Drain socket
- ④ Air discharge outlet
- ⑤ Air suction grille
- ⑥ Corner decoration cover
- ⑦ Piping connections/Wiring connection Right side
- ⑧ Piping connections/Wiring connection Rear side
- ⑨ Pipe cover (top)
- ⑩ Drain pipe connection (outside diameter ·26·)
- ⑪ L-type piping kit (upward direction)



View ·A·

The drain piping can be raised up to ·600·mm from the top surface of the unit.



Notes

1. The unit nameplate is located on the control box cover.
2. When installing a wireless controller, there will be a receiver on this location. For details, see the drawing of the wireless controller.
3. When closing the discharge grille in case of ·2·-way blow or ·3·-way blow, there are limit ations to the piping connection direction. See the installation manual.
4. Do not place any objects under the indoor unit. In case of high humidity (>80%), clogged drain outlets, or dirty air filters, condensate may drop out.

3D138403