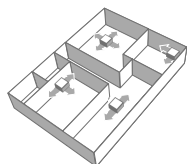


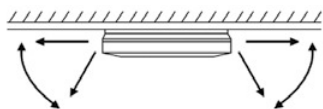
# 4-way blow ceiling suspended unit

Unique Daikin unit for high rooms with no false ceilings nor free floor space

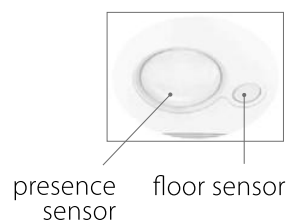
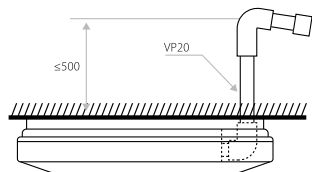
- Optimised design for R-32 refrigerant
- Even rooms with ceilings up to 3.5m can be heated up or cooled down very easily without capacity loss
- Can easily be installed in both new and refurbishment projects
- Two optional intelligent sensors improve energy efficiency and comfort
- Individual flap control: flexibility to suit every room layout without changing the location of the unit!



- Stylish unit blends easily with any interior. The flaps close entirely when the unit is not operating.
- Optimum comfort guaranteed with automatic air flow adjustment to the required load
- 5 different discharge angles between 0 and 60° can be programmed via the remote control



- Standard drain pump with 720mm lift increases flexibility and installation speed



FXUA-A

Indoor Unit				FXUA	50A	71A	100A
Cooling capacity	Total capacity At high fan speed			kW	5.6	8.0	11.2
	Nom.			kW	5.6	8.0	11.2
Heating capacity	Total capacity At high fan speed			kW	6.3	9.0	12.5
	Nom.			kW	6.3	9.0	12.5
Power input - 50Hz	Cooling	At high fan speed		kW	0.029	0.055	0.117
	Heating	At high fan speed		kW	0.029	0.055	0.117
Dimensions	Unit	HeightxWidthxDepth		mm	198x950x950		
Weight	Unit			kg	27		28
Casing	Material				Resin		
Fan	Air flow rate - 50Hz	Cooling	At high / medium / low fan speed	m³/min	17.0/14.5/13.0	22.5/18.5/16.0	31.0/25.5/21.0
		Heating	At high / medium / low fan speed	m³/min	17.0/14.5/13.0	22.5/18.5/16.0	31.0/25.5/21.0
Air filter	Type				Resin net		
Sound power level	Cooling	At high / medium / low fan speed		dBA	55.0/53.0/51.0	58.0/56.0/54.0	65.0/62.0/58.0
Sound pressure level	Cooling	At high / medium / low fan speed		dBA	37.0/35.0/33.0	40.0/38.0/36.0	47.0/44.0/40.0
	Heating	At high / medium / low fan speed		dBA	37.0/35.0/33.0	40.0/38.0/36.0	47.0/44.0/40.0
Refrigerant	Type/GWP				R-32/675		
Piping connections	Liquid	OD	mm		6.35		9.52
	Gas	OD	mm		12.7		15.9
	Drain				VP20		
Power supply	Phase/Frequency/Voltage			Hz/V	1~/50/60/220-240/220		
Current - 50Hz	Maximum fuse amps (MFA)			A	6		
Control systems	Infrared remote control				BRC7CB58 / BRC7CB59		
	Wired remote control				BRC1H52W/S/K		

Contains fluorinated greenhouse gases