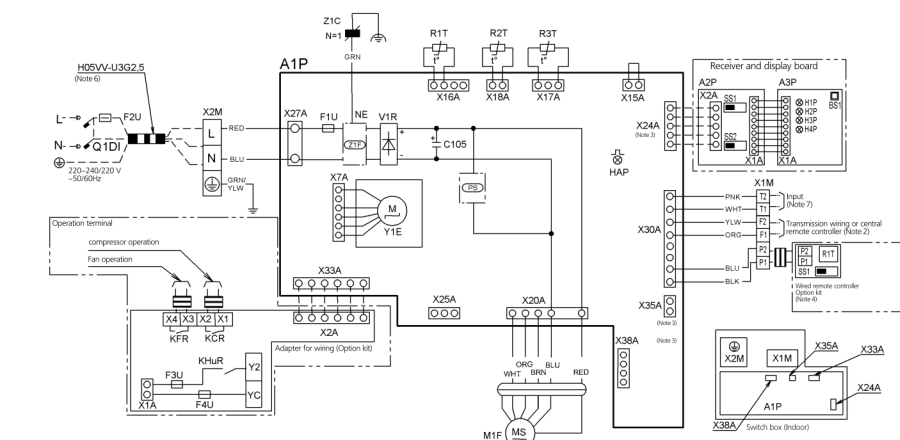


# 10 Wiring diagrams

## 10 - 1 Wiring Diagrams - Single Phase

### FXNQ-A

Indoor unit	
A1P	: Printed circuit board
C105	: Capacitor
F2U	: Power supply
F1U	: Fuse (T, 3.15A, 250V)
F2U	: Field fuse
Z1C	: Ferrite core
H4P	: Light emitting diode (Service monitor-green)
M1F	: Motor (Fan)
Q1DI	: Earth leakage detector
R1T	: Thermistor (Air)
R2T,R3T	: Thermistor (Coil)
V1R	: Diode bridge
X1M	: Terminal block (control)
X2M	: Terminal block (Upward liquid pipe connection)
Y1E	: Electronic expansion valve
Z1D	: Noise filter
Receiver and display board	
A2P	: Printed circuit board
A3P	: Printed circuit board
BS1	: Push button (On/Off)
H1P	: Light emitting diode (on-red)
H2P	: Light emitting diode (filter diagnostic - red)
H3P	: Light emitting diode (timer-green)
H4P	: Light emitting diode (defrost-orange)
SS1	: Selector switch (Main/Sub)
SS2	: Selector switch (Infrared address set)
Connector (Optional accessories)	
X24A	: Connector (Infrared remote controller)
X33A	: Connector (Adapter for wiring)
X35A	: Connector (Power supply)
X38A	: Connector (Multitenant)
Adapter for wiring	
F3U,F4U	: Fuse (BB, 5A, 250V)
KFR, KCR, KHuR	: Magnetic relay
Wired remote controller	
R1T	: Thermistor (air)
SS1	: Select switch (MAIN-SUB)



#### Notes

1. : Terminal block : Connector : Field wiring
2. In case using central remote controller, connect it to the unit in accordance with the attached installation manual.
3. X24A, X33A, X35A, X38A are connectors for the optional accessories.
4. For how to switch between the main unit and the sub units, refer to the installation manual of the remote control.
5. Colors: BLK:Black; RED:Red; BLU:Blue; WHT:White; GRN:Green; YLW:Yellow; BRN:Brown; ORG:Orange; PNK:Pink; GRV:Gray; PRP:purple
6. If the piping is protected, use cable type H05VV-U3G2.5. If the piping is not protected, use cable type H07RN-F.
7. When connecting the input wires from outside, forced OFF or ON/OFF control operation can be selected by the remote controller, see manual for detail.

• : Wire clamp  
 ⊕ : Protective earth (screw)  
 L : Live  
 N : Neutral

3D095598