

9 Wiring diagrams

9 - 1 Wiring Diagrams - Single Phase

FXNA-A

INDOOR UNIT	
A1P	PRINTED CIRCUIT BOARD (MAIN)
C105	CAPACITOR
F1U	FUSE (T, 3.15A, 250V)
HAP	FLASHING LAMP (SERVICE MONITOR: GREEN)
MTF	MOTOR (INDOOR FAN)
R1T	THERMISTOR (AIR)
R2T, R3T	THERMISTOR (COIL)
Y1K	DIODE BRIDGE
X7A, X801A	CONNECTOR
X1M	TERMINAL BLOCK (REMOTE CONTROLLER)
X2M	TERMINAL BLOCK (POWER SUPPLY)
Y1F	NOISE FILTER
PS	SWITCHING POWER SUPPLY
Y1E	ELECTRONIC EXPANSION VALVE
Q1R	RESIDUAL CURRENT DEVICE
Q1C	CIRCUIT BREAKER
NE	NOISELESS EARTH
CN1	GAS SENSOR CONNECTOR
A2P	PRINTED CIRCUIT BOARD (GAS SENSOR)
WIRED REMOTE CONTROLLER	
R1T	THERMISTOR (AIR)

WIRE COLOURS

RED: RED

BLK: BLACK

BLU: BLUE

YLV: YELLOW

BRN: BROWN

ORC: ORANGE

WHT: WHITE

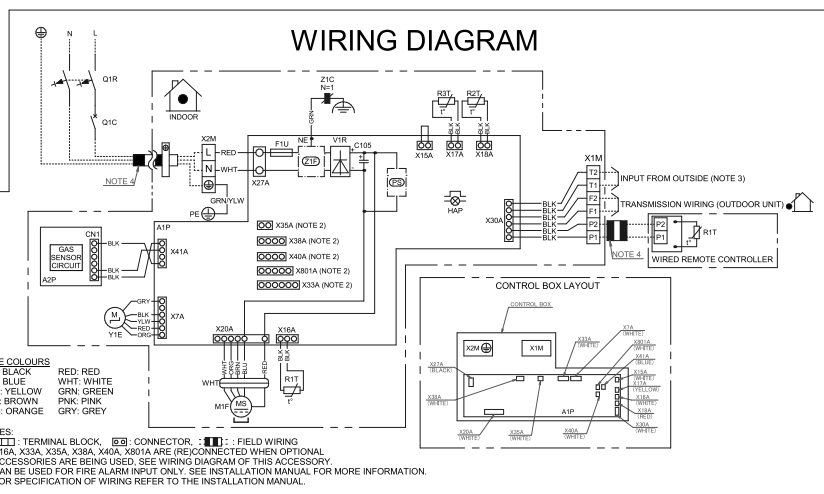
GRN: GREEN

PNK: PINK

GRY: GREY

NOTES:

1. (T) : TERMINAL BLOCK, (C) : CONNECTOR, (F) : FIELD WIRING
2. X15A, X33A, X35A, X38A, X40A, X801A ARE (RE)CONNECTED WHEN OPTIONAL ACCESSORIES ARE BEING USED. SEE WIRING DIAGRAM OF THIS ACCESSORY.
3. CAN BE USED FOR FIRE ALARM INPUT ONLY. SEE INSTALLATION MANUAL FOR MORE INFORMATION.
4. FOR SPECIFICATION OF WIRING REFER TO THE INSTALLATION MANUAL.



3D152904