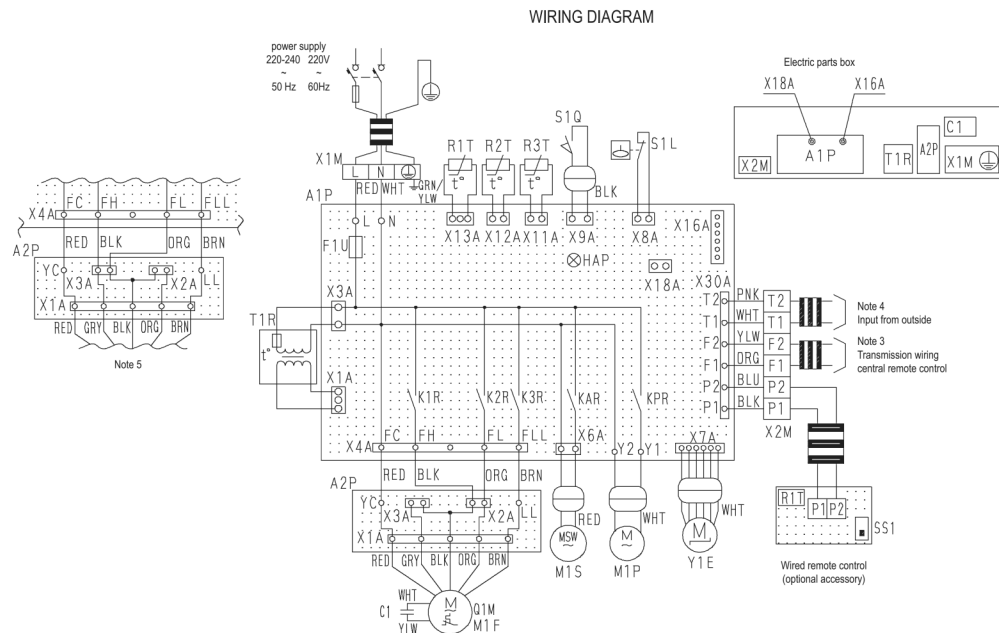


9 Wiring diagrams

9 - 1 Wiring Diagrams - Single Phase

FXKQ-MA



Indoor unit		R1T	Thermistor (air)	Wired remote control	
A1P	Printed circuit board	R2T • R3T	Thermistor (coil)	R1T	Thermistor (air)
A2P	Terminal board	S1L	Float switch	SS1	Selector switch (main/sub)
C1	Capacitor (M1F)	S1Q	Limit switch (swing flap)	Connector (adaptor for wiring)	
F1U	Fuse (B), 5A, 250V	T1R	Transformer (220-240V/22V)	X16A	Connector (adaptor for wiring)
HAP	Light emitting diode (service monitor green)	X1M	Terminal block (power)	X18A	Connector (wiring adapter for electrical appendices)
K1R-K3R	Magnetic relay (M1F)	X2M	Terminal block (control)		
KAR	Magnetic relay (M1S)	Y1E	Electronic expansion valve		
KPR	Magnetic relay (M1P)				
M1F	Motor (indoor fan)				
M1P	Motor (drain pump)				
M1S	Motor (swing flap)				
Q1M	Thermo switch (M1F embedded)				

3D039564C

NOTES

- : Terminal strip □□ : connector -○- : terminal ⊕ : protective earth (screw)
- ≡ : Field wiring
- In case using central remote control, connect to the unit in accordance with the attached instruction manual.
- When connecting the input wires from outside, forced OFF or ON/OFF control operation can be selected by remote control. In details, refer to the installation manual attached the unit.
- In case high E.S.P. operation, change over the wiring connecting from X2A to X3A.
- Symbols show as follows. (PNK: pink, WHT: white, YLW: yellow, ORG: Orange, BLU: blue, BLK: black, RED: red, BRN: brown, GRY: gray)
- Use copper conductors only.