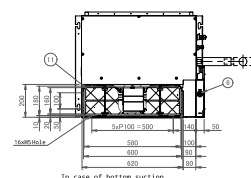
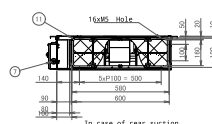
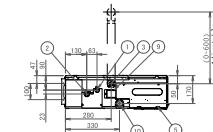
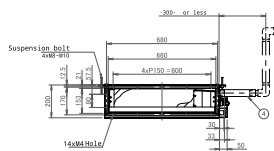
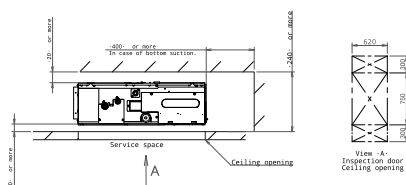
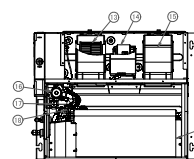


7

[illegible]

- ## Notes

1. In case of bottom suction, mount the chamber cover to the backside of the unit.
For more information, refer to the installation manual.
2. In case of rear suction, mount the chamber cover to the bottom side of the unit.
For more information, refer to the installation manual.
3. The unit nameplate is located on the control box cover.
4. Mount the air filter at the suction side.
Use an air filter with a dust collecting efficiency of at least ~50% (measured by gravimetric analysis).
When a duct is connected at the suction side, it is not possible to mount an air filter.



Item	
1	Liquid pipe connection -ø6.35-Flare connection
2	Gas pipe connection -ø9.52-Flare connection
3	Drain pipe connection Outside diameter: -ø26- Inside diameter: -ø20
4	Drain hose (accessory) Inside diameter: -ø25-
5	Control box
6	Transmission wiring connection
7	Power supply connection
8	Suspension bracket
9	Inspection door
10	Drain socket
11	Air filter (accessory)
12	Heat exchanger
13	Turbo fan
14	Fan motor
15	Fan housing
16	Drain pump
17	Float switch
18	Electronic expansion valve

2D126395

Service space of installation box for adaptor PCB.

300 or more

950

300 or more

Service space

22x28-7 Hole

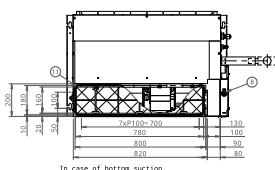
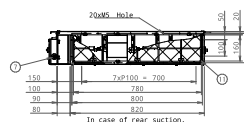
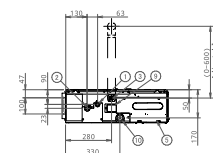
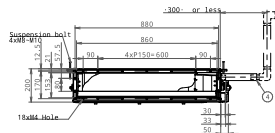
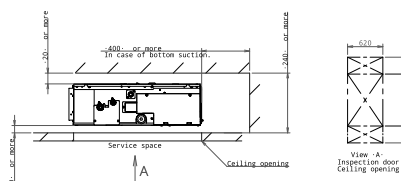
8øP100-200=800

Suspension bolt, pitch

Suspension bolt, pitch

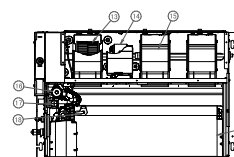
Suspension bolt, pitch

Suspension bolt, pitch



- ## Notes

1. In case of bottom suction, mount the chamber cover to the backside of the unit.
For more information, refer to the installation manual.
2. In case of rear suction, mount the chamber cover to the bottom side of the unit.
For more information, refer to the installation manual.
3. The unit nameplate is located on the control box cover.
4. Mount the air filter at the suction side.
Use an air filter with a dust collecting efficiency of at least ~50% (measured by gravimetric analysis).
When a duct is connected at the suction side, it is not possible to mount an air filter.



Item	
1	Liquid pipe connection -ø6.35- Flare connection
2	Gas pipe connection -ø12.70- Flare connection
3	Drain pipe connection Outside diameter: ø26- Inside diameter: ø20
4	Drain hose (accessory)
5	Control box
6	Transmission wiring connection
7	Power supply connection
8	Suspension bracket
9	Inspection door
10	Drain socket
11	Air filter (accessory)
12	Heat exchanger
13	Turbo fan
14	Fan motor
15	Fan housing
16	Drain pump
17	Float switch
18	Electronic expansion valve

2D126677