

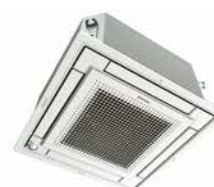


FFA-A9 / RXM-R

Unique design in the market that integrates fully flat into the ceiling

- › Combination with split outdoor units is ideal for small retail, offices or residential applications
- › Fully flat integration in standard architectural ceiling tiles, leaving only 8mm
- › Remarkable blend of iconic design with an elegant finish in white or a combination of silver and white
- › Individual louvre control: flexibility to suit every room layout without changing the location of the indoor unit
- › Two optional intelligent sensors improve energy efficiency and comfort
- › No optional adapter needed for DIII-connection, link your unit directly into the wider building management system
- › Reduced energy consumption thanks to specially developed small tube heat exchanger, DC fan motor and drain pump
- › Optional fresh air intake
- › Standard drain pump with 675mm lift increase flexibility and installation speed

R-32 BLUEVOLUTION



FFA-A (White)



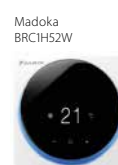
FFA-A (Silver)



RXM50-60R



BRC7F530S/W (optional)



Madoka BRCIH52W



WI-FI CONTROL VIA APP



WI-FI ADAPTOR

AVAILABLE AS AN OPTION



FFA-A9 / RXM-R

R-32 BLUEVOLUTION

| Indoor Units | | | FFA25A9 | FFA35A9 | FFA50A9 | FFA60A9 |
|---------------------------------------|---------------------------|--------|-----------------------|-----------------------|-----------------------|-----------------------|
| Capacity | UK Total Cooling | kW | 2.44 | 3.32 | 4.89 | 5.57 |
| | UK Sensible Cooling | kW | 1.81 | 2.28 | 3.27 | 3.86 |
| | Nominal Cooling | kW | 2.5 | 3.4 | 5.0 | 5.7 |
| | Nominal Heating | kW | 3.2 | 4.2 | 5.8 | 7.0 |
| Seasonal Efficiency (EN14825) COOLING | Energy Label | | A++ | A++ | A+ | A+ |
| | Pdesign | kW | 2.5 | 3.4 | 5.0 | 5.7 |
| | SEER | | 6.17 | 6.38 | 5.98 | 5.76 |
| | Annual Energy Consumption | kWh | 142 | 186 | 292 | 347 |
| Seasonal Efficiency (EN14825) HEATING | Energy Label | | A+ | A+ | A | A+ |
| | Pdesign | kW | 2.31 | 3.10 | 3.84 | 3.96 |
| | SCOP | | 4.24 | 4.10 | 3.90 | 4.04 |
| | Annual Energy Consumption | kWh | 762 | 1058 | 1377 | 1372 |
| Air Flow Rate (Cooling) | High / Med / Low | m³/sec | 0.150 / 0.133 / 0.108 | 0.167 / 0.141 / 0.108 | 0.212 / 0.181 / 0.143 | 0.241 / 0.208 / 0.158 |
| Dimensions (with Decoration Panel) | Height | mm | 260 (306) | 260 (306) | 260 (306) | 260 (306) |
| | Width | mm | 575 (620) | 575 (620) | 575 (620) | 575 (620) |
| | Depth | mm | 575 (620) | 575 (620) | 575 (620) | 575 (620) |
| Weight (with Decoration Panel) | | kg | 16 (18.8) | 16 (18.8) | 17.5 (20.3) | 17.5 (20.3) |
| Sound Pressure (Cooling) | High / Med / Low | dBA | 31 / 28.5 / 25 | 34 / 30.5 / 25 | 39 / 34 / 27 | 43 / 40 / 32 |
| Sound Pressure (Heating) | High / Med / Low | dBA | 31 / 28.5 / 25 | 34 / 30.5 / 25 | 39 / 34 / 27 | 43 / 40 / 32 |
| Sound Power (Cooling) | | dBA | 48 | 51 | 56 | 60 |

| Outdoor Units | | | RXM25R9 | RXM35R9 | RXM50R | RXM60R |
|---------------------------|-------------------------------|-------------|-----------------------|-----------------------|------------------------|------------------------|
| Dimensions | Height x Width x Depth | mm | 550 x 765 x 285 | 550 x 765 x 285 | 734 x 870 x 373 | 734 x 954 x 401 |
| Weight | | kg | 32 | 32 | 49 | 49 |
| Electrical Details | Power Supply | | 1ph | 1ph | 1ph | 1ph |
| | Maximum Input Current (MCA) A | | 10.79 | 10.79 | 14.32 | 15.09 |
| | Max Fuse Size | A | 13 | 13 | 16 | 16 |
| Interconnection Wiring | Core / Cable Size | | 3+E / 1.5 | 3+E / 1.5 | 3+E / 1.5 | 3+E / 1.5 |
| Piping Connections | Liquid / Gas | inches (mm) | 1/4 (6.4) / 3/8 (9.5) | 1/4 (6.4) / 3/8 (9.5) | 1/4 (6.4) / 1/2 (12.7) | 1/4 (6.4) / 1/2 (12.7) |
| Pipework | Maximum Length | m | 20 | 20 | 30 | 30 |
| | Maximum Vertical Rise | m | 15 | 15 | 20 | 20 |
| | Precharged to | m | 10 | 10 | 10 | 10 |
| | Additional charge | g/m | 20 | 20 | 20 | 20 |
| | Holding charge | kg | 0.76 | 0.76 | 1.15 | 1.15 |
| Sound Pressure (Cooling) | Nominal | dBA | 46 | 49 | 48 | 48 |
| Sound Pressure (Heating) | Nominal | dBA | 47 | 49 | 49 | 49 |
| Sound Power (Cooling) | | dBA | 58 | 61 | 62 | 63 |
| Operating Range (Cooling) | Min / Max | °CDB | -10 / 46 | -10 / 46 | -10 / 46 | -10 / 46 |
| Operating Range (Heating) | Min / Max | °CWB | -15 / 18 | -15 / 18 | -15 / 18 | -15 / 18 |
| Air Flow Rate (Cooling) | Nominal | m³/sec | 0.472 | 0.600 | 0.777 | 0.777 |

Accessories:

| Accessory Ref | Description |
|---------------|--|
| BYFQ60CW | Fully Flat Cassette Decoration Panel - White (Included as standard) |
| BRP069C81 | Wifi adaptor for connection to on-line controller |
| BRC1H52W | Wired touch screen remote controller - White (Included as standard) |
| BRC1H52S | Wired touch screen remote controller - Silver |
| BRC1H52K | Wired touch screen remote controller - Black |
| BDBHQ44C60 | Sealing member for decoration panel FFA,FXZQ |
| BRC7EB530W | Wireless remote for fully flat cassette Old Style decoration panel |
| BRC7F530S | Wireless remote controller for Silver ceiling decoration panel |
| BRC7F530W | Wireless remote controller for White ceiling decoration panel |
| BRYQ60AS | Integral PIR sensor for fully flat cassette Silver decoration panel. Enables energy saving functions |
| BRYQ60AW | Integral PIR sensor for fully flat cassette White decoration panel. Enables energy saving functions |
| BYFQ60B3 | Fully Flat Cassette Decoration Panel - Old style (FFQ-B9V looks) |
| BYFQ60CS | Fully Flat Cassette Decoration Panel - Silver |

| Accessory Ref | Description |
|--------------------|--|
| K.CGM | Condensing Unit Guard (1150 x 1150 x 650) |
| K.CWB90-2 | Wall bracket (90kg, 500mm support arm) |
| K.DT1 | Condensate drip tray for use with K.CWB90-2 |
| K.RSS | Wireless room mounted temperature sensor and receiver |
| KLIC-DI | KNX Interface for Sky Air and VRV systems |
| KRCS01-4 | Remote room mounted temperature sensor |
| KRP1B57 and UK.FB2 | Adaptor PCB for Interlock to fresh air fan |
| KRP4A53 and UK.FB2 | Unit/group adaptor PCB for remote on/off, status indication and temperature setting |
| RS-SE | Service and configuration tool for K.RSS |
| RTD-10 and UK.FB2 | Enhanced function PCB for Sky Air and VRV. Duty rotation, Lead Lag control and heating interlock |
| RTD-20 and UK.FB2 | Energy control PCB for Sky Air and VRV |
| RTD-NET and UK.FB2 | Modbus interface PCB for Sky Air and VRV |

The present leaflet is drawn up by way of information only and does not constitute an offer binding upon Daikin UK. Daikin UK has compiled the content of this leaflet to the best of its knowledge. No express or implied warranty is given for the completeness, accuracy, reliability or fitness for particular purpose of its content and the products and services presented therein. Specifications are subject to change without prior notice. Daikin UK explicitly rejects any liability for any direct or indirect damage, in the broadest sense, arising from or related to the use and/or interpretation of this leaflet. All content is copyrighted by Daikin UK.



FSC

Daikin Europe N.V. participates in the Eurovent Certification programme for Air conditioners (AC), Liquid Chilling Packages (LCP), Air handling units (AHU) and Fan coil units (FCU). Check ongoing validity of certificate online: www.eurovent-certification.com or using: www.certiflash.com