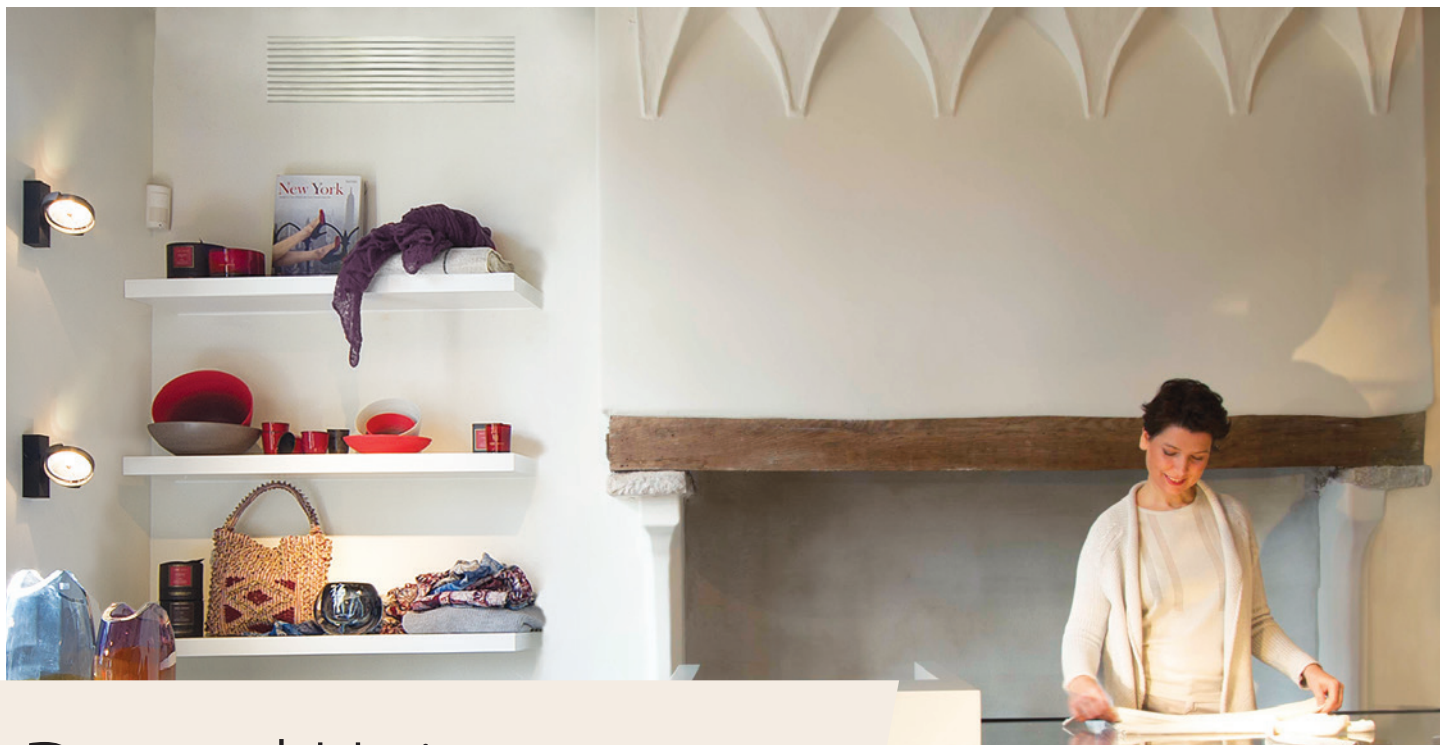




FBA-A / AZAS-M / ARXM-A *SkyAir Active-series*



Ducted Unit

Slimmest yet most powerful medium static pressure unit on the market

This ultra-slim ducted unit delivers high performance in a compact, discreet package — ideal for ceiling spaces with limited room. It runs quietly, adapts to your layout, and keeps each area perfectly comfortable, all while staying hidden behind the ceiling. With customisable airflow and multi-zone options, it's a smart solution for stylish, flexible spaces.

Slimmest in class for tight ceiling voids

With a built-in height of just 300mm, this is the slimmest unit in its class — making it ideal for renovation projects or buildings with narrow ceiling voids. It fits where others can't, without compromising on performance.

Quiet operation for undisturbed spaces

Operating as low as 25dB(A), this system is designed to run quietly in the background. It's perfect for offices, bedrooms, meeting rooms, or any setting where peace and concentration matter.

Consistent airflow across every space

With external static pressure up to 150Pa, this unit supports a wide range of duct lengths and layouts. That means reliable air distribution, even in larger or more complex spaces.

Optimised airflow, tailored to your needs

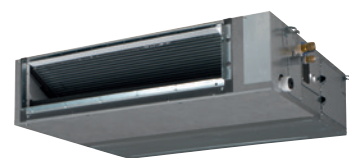
Air volume and pressure settings can be easily adjusted via a wired controller, allowing fine-tuning of airflow based on room size, layout, or usage. Comfort can be personalised without needing complex adjustments.

Discreet ceiling integration

Once installed, only the suction and discharge grilles are visible, keeping your ceiling clean and uncluttered. It's an ideal solution for maintaining minimalist aesthetics in stylish interiors or professional settings.

Flexible installation, faster setup

The unit offers rear or bottom air suction, with the option to connect custom suction grilles. Combined with a built-in drain pump with 625mm lift, this flexibility speeds up installation and expands where the unit can be placed.



FBA-A



BRC4C65
(optional)



ARXM71A

AZAS100-140M

Madoka
BRC1H52W7

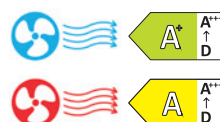


WI-FI
CONTROL
VIA APP



WI-FI ADAPTOR

AVAILABLE AS AN OPTION



Indoor Units			Single Phase				3 Phase		
			FBA71A9	FBA100A	FBA125A	FBA140A	FBA100A	FBA125A	FBA140A
Capacity	UK Total Cooling	kW	6.65	10.80	13.60	14.90	10.80	13.60	14.90
	UK Sensible Cooling	kW	4.15	7.44	9.30	10.25	7.44	9.30	10.25
	Nominal Cooling	kW	6.8	9.5	12.1	13.4	9.5	12.1	13.4
	Nominal Heating	kW	7.5	10.8	13.5	15.5	10.8	13.5	15.5
	Energy Label		A	A+	-	-	A+	-	-
Seasonal Efficiency (EN14825) COOLING	Pdesign	kW	6.8	9.5	12.1	13.4	9.5	12.1	13.4
	SEER		5.57	5.67	5.24	5.72	5.67	5.24	5.72
	ηs,c	%	-	-	191	217	-	191	217
	Annual Energy Consumption	kWh	427	586	1385	1406	586	1385	1406
	Energy Label		A	A	-	-	A	-	-
Seasonal Efficiency (EN14825) HEATING	Pdesign	kW	4.5	6.0	6.0	7.8	6.0	6.0	7.8
	SCOP		3.81	3.81	3.55	3.85	3.81	3.55	3.85
	ηs,h	%	-	-	139	151	-	139	151
	Annual Energy Consumption	kWh	1654	2205	2366	2836	2205	2366	2836
	Energy Label		A	A	-	-	A	-	-
Air Flow Rate (Cooling)	High / Med / Low	m³/min	18.0 / 15.0 / 12.5	29.0 / 24.5 / 20.0	34.0 / 29.0 / 23.5	34.0 / 29.0 / 23.5	29.0 / 24.5 / 20.0	34.0 / 29.0 / 23.5	34.0 / 29.0 / 23.5
External Static Pressure	High / Nom	Pa	150 / 30	150/40	150/50	150/50	150/40	150/50	150/50
Dimensions	Height	mm	245	245	245	245	245	245	245
	Width	mm	1000	1400	1400	1400	1400	1400	1400
	Depth	mm	800	800	800	800	800	800	800
Weight		kg	35	46	46	46	46	46	46
Sound Pressure (Cooling)	High / Med / Low	dBA	30 / 28 / 25	34 / 32 / 30	37 / 35 / 32	37 / 35 / 32	34 / 32 / 30	37 / 35 / 32	37 / 35 / 32
Sound Pressure (Heating)	High / Med / Low	dBA	31 / 28 / 25	36 / 33 / 30	38 / 35 / 32	38 / 35 / 32	36 / 33 / 30	38 / 35 / 32	38 / 35 / 32
Sound Power (Cooling)		dBA	56	58	62	62	58	62	62

Outdoor Units			ARXM71A	AZAS100MV	AZAS125MV	AZAS140MV	AZAS100MY	AZAS125MY	AZAS140MY
Dimensions	Height x Width x Depth	mm	734 x 954 x 401	990 x 940 x 320	990 x 940 x 320	990 x 940 x 320	990 x 940 x 320	990 x 940 x 320	990 x 940 x 320
Weight		kg	49	72	72	79	72	72	79
Electrical Details	Power Supply		1ph	1ph	1ph	1ph	3ph	3ph	3ph
	Maximum Input Current (MCA) A		15.83	21.5	27.8	27	14.2	14.6	14.6
	Max Fuse Size	A	16	25	32	32	16	16	16
Interconnection Wiring	Core / Cable Size		3+E / 1.5	3+E / 1.5	3+E / 1.5	3+E / 1.5	3+E / 1.5	3+E / 1.5	3+E / 1.5
Piping Connections	Liquid / Gas	inches (mm)	3/8 (9.5) / 5/8 (15.9)	3/8 (9.5) / 5/8 (15.9)	3/8 (9.5) / 5/8 (15.9)	3/8 (9.5) / 5/8 (15.9)	3/8 (9.5) / 5/8 (15.9)	3/8 (9.5) / 5/8 (15.9)	3/8 (9.5) / 5/8 (15.9)
Pipework	Maximum Length	m	30	30	30	30	30	30	30
	Maximum Vertical Rise	m	20	30	30	30	30	30	30
	Precharged to	m	10	30	30	30	30	30	30
	Additional charge	g/m	35	N/A	N/A	N/A	N/A	N/A	N/A
	Holding charge	kg	1.15	2.60	2.60	2.90	2.60	2.60	2.90
Sound Pressure (Cooling)	Nom / Night Quiet	dBA	52	53/44	53/44	54/44	53/44	53/44	54/44
Sound Pressure (Heating)	Nom / Night Quiet	dBA	52	57/44	57/44	57/44	57/44	57/44	57/44
Sound Power (Cooling)		dBA	65	70	71	73	70	71	73
Operating Range (Cooling)	Min / Max	°CDB	-10/46	-10/46	-10/46	-10/46	-10/46	-10/46	-10/46
Operating Range (Heating)	Min / Max	°CWB	-15/18	-15/15.5	-15/15.5	-15/15.5	-15/15.5	-15/15.5	-15/15.5
Air Flow Rate (Cooling)	Nominal	m³/min	46.6	69.0	71.0	76.0	69.0	71.0	76.0

Notes & Features:

- › All fan coils supplied as standard with air filter
- › New chassis with height of 245mm makes the FBA-A one of the slimmest medium static units on the market

Accessories:

Accessory Ref	Description
BRC1H52W7	Wired touch screen remote controller - White
BRC1H52S7	Wired touch screen remote controller - Silver
BRC1H52K7	Wired touch screen remote controller - Black
BRP069C81	Wi-Fi adapter for use with Daikin ONECTA App
BRC4C65	Wireless remote controller
K.RSS	Wireless room mounted temperature sensor and receiver
KLIC-DI_V2	KNX Interface for Sky Air and VRV systems
KRCS01-4	Remote room mounted temperature sensor
KRP4A53 and UK.FB2	Unit/group adaptor PCB for remote on/off, status indication and temperature setting
RTD-10 and UK.FB2	Enhanced function PCB for Sky Air and VRV. Duty rotation, Lead Lag control and heating interlock
RTD-20 and UK.FB2	Energy control PCB for Sky Air and VRV

Accessory Ref	Description
EKMBPP1A and UK.FB2	Modbus interface PCB for Sky Air and VRV
K.CGM	Condensing unit guard (1150 x 1150 x 650)
K.CWB90-2	Wall bracket (90kg, 500mm support arm)
K.DT1	Condensate drip tray for use with K.CWB90-2
K.FF600S	Two flexi-feet (Standard 600mm x 185mm x 100mm) to mount the outdoor unit
UK.RC3	Return chamber - FBA60-71 - 2X200mm Spg
UK.RC3A	Return chamber - FBA60-71 - 3X200mm Spg
UK.RC4	Return chamber - FBA100-125-140- 4X200mm Spg
UK.SF3	Supply flange - FBA60-71 - 2x200 Spg
UK.SF3A	Supply flange - FBA60-71 - 3x200 Spg
UK.SF4	Supply flange - FBA100-125-140- 4x200 Spg
RS-SE	Service and configuration tool for K.RSS

The present leaflet is drawn up by way of information only and does not constitute an offer binding upon Daikin UK. Daikin UK has compiled the content of this leaflet to the best of its knowledge. No express or implied warranty is given for the completeness, accuracy, reliability or fitness for particular purpose of its content and the products and services presented therein. Specifications are subject to change without prior notice. Daikin UK explicitly rejects any liability for any direct or indirect damage, in the broadest sense, arising from or related to the use and/or interpretation of this leaflet. All content is copyrighted by Daikin UK.



Daikin Europe N.V. participates in the Eurovent Certification programme for Air conditioners (AC), Liquid Chilling Packages (LCP), Air handling units (AHU) and Fan coil units (FCU). Check ongoing validity of certificate online: www.eurovent-certification.com or using: www.certiflash.com