

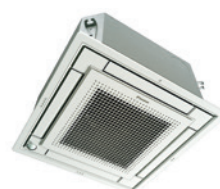


## FFA-A / RXM-M9

Unique design in the market that integrates fully flat into the ceiling

- › Combination with split outdoor units is ideal for small retail, offices or residential applications
- › Fully flat integration in standard architectural ceiling tiles, leaving only 8mm
- › Remarkable blend of iconic design with an elegant finish in white or a combination of silver and white
- › Individual louvre control: flexibility to suit every room layout without changing the location of the indoor unit
- › Two optional intelligent sensors improve energy efficiency and comfort
- › No optional adapter needed for DIII-connection, link your unit directly into the wider building management system
- › Reduced energy consumption thanks to specially developed small tube heat exchanger, DC fan motor and drain pump
- › Optional fresh air intake
- › Standard drain pump with 675mm lift increase flexibility and installation speed

**R-32** **BLUEVOLUTION**



FFA-A (White)



FFA-A (Silver)



RXM42-60M9



BRC1E53A



BRC7F530S / W  
(optional)



BRP069A81  
(optional)



**WI-FI ADAPTOR**

**AVAILABLE AS AN OPTION**

## FFA-A / RXM-M9

**R-32** BLUEEVOLUTION

Indoor Units			FFA25A	FFA35A	FFA50A	FFA60A
Capacity	UK Total Cooling	kW	2.44	3.32	4.62	5.72
	UK Sensible Cooling	kW	1.81	2.28	3.40	4.20
	Nominal Cooling	kW	2.5	3.4	5.0	5.7
	Nominal Heating	kW	3.2	4.2	5.8	7.0
Seasonal Efficiency (EN14825) COOLING	Energy Label		A++	A++	A+	A+
	Pdesign	kW	2.5	3.4	5.0	5.7
	SEER		6.17	6.38	5.98	5.76
	Annual Energy Consumption	kWh	142	186	292	347
Seasonal Efficiency (EN14825) HEATING	Energy Label		A+	A+	A	A+
	Pdesign	kW	2.31	3.10	3.84	3.96
	SCOP		4.24	4.10	3.90	4.04
	Annual Energy Consumption	kWh	762	1058	1377	1372
Nominal Efficiency	EER/COP		4.57/3.90	3.81/3.50	3.24/3.49	3.05/3.41
Air Flow Rate (Cooling)	High / Nom / Low	m³/sec	0.150/0.133/0.108	0.166/0.141/0.108	0.200/0.166/0.125	0.241/0.208/0.158
Dimensions (with Decoration Panel)	Height	mm	260 (306)	260 (306)	260 (306)	260 (306)
	Width	mm	575 (620)	575 (620)	575 (620)	575 (620)
	Depth	mm	575 (620)	575 (620)	575 (620)	575 (620)
Weight (with Decoration Panel)		kg	16 (18.8)	16 (18.8)	17.5 (20.2)	17.5 (20.2)
Sound Pressure (Cooling)	High / Nom / Low	dBA	31/28.5/25	34/30.5/25	39/34/27	43/40/32
Sound Pressure (Heating)	High / Nom / Low	dBA	31/28.5/25	34/30.5/25	39/34/27	43/40/32
Sound Power (Cooling)		dBA	48	51	56	60

Outdoor Units			RXM25M9	RXM35M9	RXM50M9	RXM60M9
Dimensions	Height x Width x Depth	mm	550 x 765 x 285	550 x 765 x 285	735 x 825 x 300	735 x 825 x 300
Weight		kg	32	32	47	47
Electrical Details	Power Supply		1ph	1ph	1ph	1ph
	Running Current	A	-	-	-	-
	Starting Current	A	-	-	-	-
	Max Fuse Size	A	10	10	15	15
Interconnection Wiring	Core / Cable Size		3+E / 1.5		3+E / 1.5	
Piping Connections	Liquid / Gas	inches (mm)	1/4 (6.4) / 3/8 (9.5)		1/4 (6.4) / 1/2 (12.7)	
Pipework	Maximum Length	m	20	20	30	30
	Maximum Vertical Rise	m	20	20	20	20
	Precharged to	m	10	10	10	10
	Additional charge	g/m	20	20	20	20
	Holding charge	kg	0.76	0.76	1.40	1.45
Sound Pressure (Cooling)	Nominal	dBA	46	49	48	48
Sound Pressure (Heating)	Nominal	dBA	47	49	49	49
Sound Power (Cooling)		dBA	59	61	62	63
Operating Range (Cooling)	Min / Max	°CDB	-10/46	-10/46	-10/46	-10/46
Operating Range (Heating)	Min / Max	°CWB	-15/18	-15/18	-15/18	-15/18
Air Flow Rate (Cooling)	Nominal	m³/sec	0.600	0.600	0.840	0.840
ECA Eligible			●	●		

Accessory Ref	Description
BYFQ60CW	Fully Flat Cassette Decoration Panel - White (Included as standard)
BRC1E53A	Premium wired remote controller (Included as standard)
BRP069A81	Wifi adaptor for connection to on-line controller
BDBHQ44C60	Sealing member for decoration panel FFA, FXZQ
BRC7EB530W	Wireless remote for fully flat cassette Old Style decoration panel
BRC7F530S	Wireless remote controller for Silver ceiling decoration panel
BRC7F530W	Wireless remote controller for White ceiling decoration panel
BRYQ60AS	Integral PIR sensor for fully flat cassette Silver decoration panel. Enables energy saving functions
BRYQ60AW	Integral PIR sensor for fully flat cassette White decoration panel. Enables energy saving functions
BYFQ60B3	Fully Flat Cassette Decoration Panel - Old style (FFQ-B9V looks)
BYFQ60CS	Fully Flat Cassette Decoration Panel - Silver
K.CGM	Condensing unit guard size 42-71

Accessory Ref	Description
K.CGS	Condensing unit guard size 20-35
K.CWB90-2	Condensing unit bracket - up to size 71, max weight 90kg of ODU
K.DT1	Condensate drip tray for use with K.CWB90-2
K.RSS	Wireless room mounted temperature sensor and receiver
KLIC-DI	KNX Interface for Sky Air and VRV systems
KRCS01-4	Remote room mounted temperature sensor
KRP1B57 and UK.FB2	Adaptor PCB for Interlock to fresh air fan
KRP4A53 and UK.FB2	Unit/group adaptor PCB for remote on/off, status indication and temperature setting
RS-SE	Service and configuration tool for K.RSS
RTD-10 and UK.FB2	Enhanced function PCB for Sky Air and VRV. Duty rotation, Lead Lag control and heating interlock
RTD-20 and UK.FB2	Energy control PCB for Sky Air and VRV
RTD-NET and UK.FB2	Modbus interface PCB for Sky Air and VRV

The present leaflet is drawn up by way of information only and does not constitute an offer binding upon Daikin UK. Daikin UK has compiled the content of this leaflet to the best of its knowledge. No express or implied warranty is given for the completeness, accuracy, reliability or fitness for particular purpose of its content and the products and services presented therein. Specifications are subject to change without prior notice. Daikin UK explicitly rejects any liability for any direct or indirect damage, in the broadest sense, arising from or related to the use and/or interpretation of this leaflet. All content is copyrighted by Daikin UK.



FSC

Daikin Europe N.V. participates in the Eurovent Certification programme for Air conditioners (AC), Liquid Chilling Packages (LCP), Air handling units (AHU) and Fan coil units (FCU). Check ongoing validity of certificate online: [www.eurovent-certification.com](http://www.eurovent-certification.com) or using: [www.certiflash.com](http://www.certiflash.com)